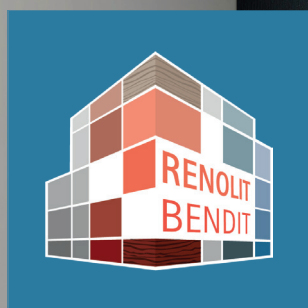




*Rely on it.*

# RENOLIT BENDIT

For that certain bend



Our Facade  
Solutions,  
Your  
Signature.



RENOLIT  
BENDIT

„Bend it.“



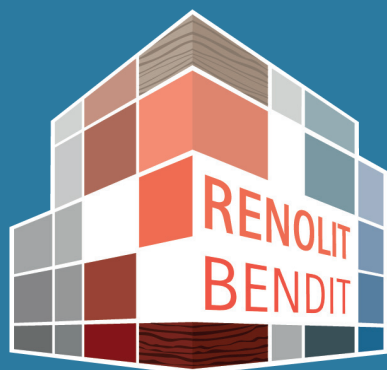


With **RENOLIT BENDIT** you do not have to bend.

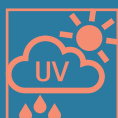
Jointless cladding bend without white break in the film.  
With the new bending cladding panel **RENOLIT BENDIT** this is possible. Its specially developed coating film is available in a selection of original colors, decors and embossings of **RENOLIT EXOFOL** films. That's why all solutions look like they come from a single mold.

# RENOLIT BENDIT

## Advantages



extraordinary  
Thermostability



UV and  
Weather resistant



High bending stability



Plane  
Plate surface



sustainable and  
durable



Optics and embossing  
like window film



universal application



Low dead weight



Tilts up to 90  
Without white fracture

# RENOLIT BENDIT

---

## Structure

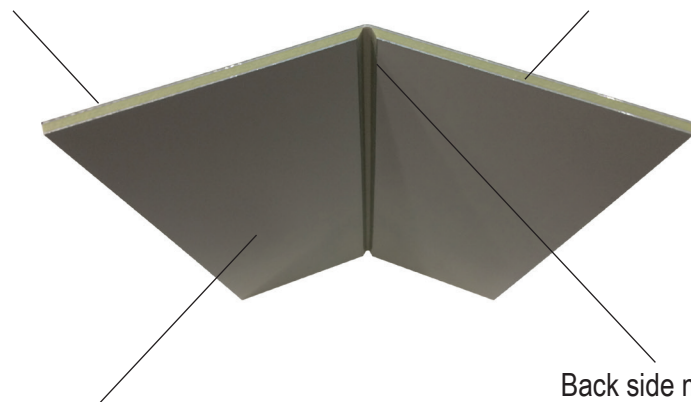
This is because your new coating film can be cold-formed, completely without any appearance of white fracture. Simply mill a small groove on the back of the sheet, and you can bend **RENOLIT BENDIT** at exactly the angle you need.

Anything goes up to 90 degrees.

The edging sits exactly where you want it, and the beautiful surface does it all.

Surface visible side:  
white fracture-free  
Coating film

Thickness (incl. foil): 4.2 mm



Back surface:  
Aluminum

Back side milling

Plate format: 1.250 x 2.800 x 4,2 mm

Click here for our processing videos:

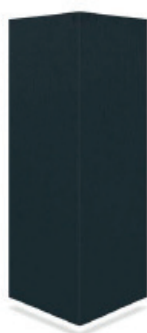


<https://go.renolit.com/bendit>

# RENOLIT BENDIT

---

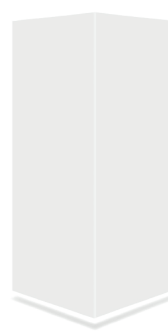
## Assortment



Anthracite grey7016



Golden Oak

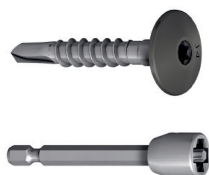


Window White 9016

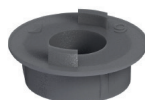
You can find our entire color and decor assortment here:



For our **RENOLIT BENDIT** cladding panels we offer as an accessory a fastening system for the absorption of thermal length changes of the claddings, which is available with screws matched in color to the respective decor.



Screws (in all colors),  
Fastening tool



Centering sleeve fixed point



Centering sleeve Sliding point

You can see how the fastening system works in this video:





**RENOLIT  
BENDIT**

---

References



**RENOLIT  
BENDIT**

---

References





**RENOLIT  
BENDIT**

---

References



**RENOLIT  
BENDIT**

---

References



**RENOLIT  
BENDIT**

---

References







*Rely on it.*

## **RENOLIT SE**

Market Unit Facade  
Horchheimer Str. 74  
67547 Worms | Germany

Phone: +49.151.414.89344  
[facade@renolit.com](mailto:facade@renolit.com)  
[www.renolit.com/facade](http://www.renolit.com/facade)

- Your Partner -